



EVA FILM

E-SHINE NEW MATERIAL TECHNOLOGY CO. LTD



Dubai Office
+971 50 291 0889
www.fuyingroup.com
1102, Jebal Ali first, Dubai, UAE

TABLE OF CONTENTS

01

About Our Factory

02

Product Overview

03

EVA Film TDS

04

Storage Guidelines

05

Contact Information

About Our Factory

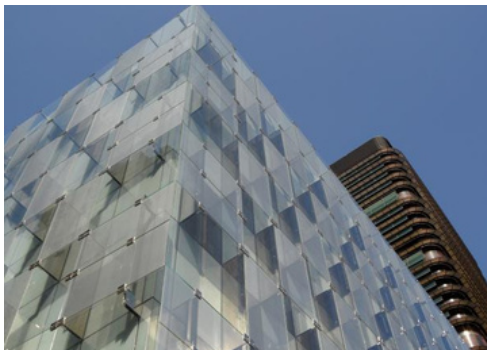
E-Shine New Material Technology Co., Ltd. was founded in 2013, is a modern high-tech enterprise professionally in research and development, production and sales of EVA Film. Our state-of-the-art EVA film factory features four production lines dedicated to clear EVA films and one specialized line for color EVA films. Utilizing the latest technology in high-precision extrusion and automated quality control, our facility ensures the production of high-quality films with exceptional clarity and consistency. These clear EVA films are ideal for applications such as solar panel encapsulation, laminated glass, and packaging, while our color EVA films cater to decorative and branding needs with their vibrant and durable properties. Committed to innovation and sustainability, our factory is optimized for energy efficiency and integrates smart manufacturing systems for real-time data analysis and improved operational efficiency. Our team of experts continuously invests in research and development to refine our processes and enhance our product offerings. With a focus on delivering top-quality EVA films, we stand at the forefront of the industry, meeting the diverse needs of our customers with excellence and reliability.

PRODUCTS OVERVIEW

1. Clear EVA Film
2. Jade Sand Series
3. White & Color Series
4. PDLC - special EVA Film For Smart Glass
5. Smart Film

Applications of Eva Film

- Architectural Glass
- Safety Glass
- Photovoltaic panels



SUPER CLEAR EVA FILM

GS-TC series(super clear with no EVA overflow) is made of modified plastic material by special processing. It has the advantages of no overflow at the edge, high toughness, high transparency, high bonding strength, high elongation and good low-temperature resistance. It is an ideal bonding material for laminated safety glass. This product is widely used in the compound of safety glass, such as guardrail, staircase handrails, sunlight room and so on.

✓ 0.38

✓ 0.76

✓ 1.14

✓ 1.52

ITEMS	Unit	Performance Index
Melting Point	C	68
Density	g/cm ³	0.958
Glass transition Temp	C	-45
Tensile Strenght	Mpa	44.6
Elongation before laminated	%	842
Degree if Crosslinking	%	85
Water Absorption	%	≤0.1
Haze	%	0.3
Light Transmittance	%	91
Bonding Strenght(Glass)	N/10mm	112
UV Reduction	%	≥30
UV Aging Resistance	15Kwh/m ² , 290-385nm	89.2
Damp and Heat Aging	85C,85%humidity 1000h	88.6
Impact Resistance Against Shot-bag	1200MM	Qualified
Ball Impact Resistance	4800MM	Qualified
Humidity Aging Resistance		Qualified



HIGH CLEAR EVA FILM

GS-TH series EVA film for high transparent safety glass is made of high quality, visual transparent polyester material processed by special equipment. It has the characteristics of toughness, high transparency, high bonding strength, high elongation, good low temperature resistance and so on. It is an ideal bonding material for laminating safety glass in the world. The glass can be widely used in curtain wall, sunshine room, guardrail, staircase handrail and other special glass production fields. Our film has passed the test by China national safety glass & quartz glass test center and fully in line with the standard of GB 9962-1999.

✓ 0.38

✓ 0.76

✓ 1.14

✓ 1.52

ITEMS	Unit	Performance Index
Melting Point	C	66
Density	g/cm ³	0.954
Glass transition Temp	C	-45
Tensile Strenght	Mpa	24.9
Elongation before laminated	%	811
Degree if crosslinking	%	75
Water Absorption	%	≤0.1
Haze	%	0.27
Light Transmittance	%	90.3
Bonding Strenght(Glass)	N/10mm	98
UV Reduction	%	≥20
UV Aging Resistance	15Kwh/m ² .290 - 385nm	Qualified
Damp and Heat Aging	85C,85%Humidity 1000h	Qualified
Impact Resistance Against Shot-bag	1200MM	Qualified
Ball Impact Resistance	4800MM	Qualified
Humidity Aging Resistance		Qualified



JADE SAND SERIES

There are 2 kinds of jade sand EVA film supplied by my company: GS38YS-1# light jade sand and GS38YS-2# deep jade sand.

Light jade sand is mainly used for high grade laminated glass, which shows the effect of jade perfectly.

Deep jade sand is mainly used in the production of bathroom partition and shower room glass. The glass can through the light but no shadow. It can make the glass have the aesthetic feeling of jade.

ITEMS	Unit	Performance Index
Melting Point	C	70
Density	g/cm ³	0.955
Glass transition Temp	C	-45
Tensile Streight	Mpa	36
Elongation before laminated	%	65.8
Water Absorption	%	≤0.1
Haze	%	0.67
Light Transmittance	%	≥99
Bonding Streight(Glass)	N/10mm	72
UV Reduction	%	≥99
UV Aging Resistance	%	65.4
Damp and Heat Aging	%	62.9
Impact Resistance Against Shot-bag	1200MM	Qualified
Ball Impact Resistance	3000MM	Qualified
Humidity Aging Resistance		Qualified



Features:

- **Aesthetic Design:** The jade sand finish can be used for decorative purposes in architectural designs, providing a unique look that mimics frosted or textured glass.
- **Privacy:** The slightly opaque finish helps in creating privacy screens, partitions, or windows where both light transmission and privacy are desired.
- **Safety:** Like all laminated glass, it improves safety

WHITE & COLOR SERIES

Our white and colored EVA film is suitable for interior decoration, KTV tea-house, coffee shop, bar, dance hall, business hall, home decoration, studio, wall lamp, sales department, shop, villa, staircase floor glass and so on. There are more than 20 colors to be chose from. Our EVA film can produce a variety of high-grade artistic decorative glass which bring romantic colors to your home and make your life more vibrant.

✓ 0.38



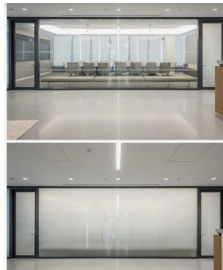
PDLC - SPECIAL EVA FILM FOR SMART GLASS

GS80PDLC super clear EVA glass interlayer film is developed for PDLC smart and intelligent glass. PDLC meaning “polymer-dispersed liquid crystal”.

Four Major Advantages:

- High light transmittance (light transmittance can reach 93%), showing perfect visual effect.
- Super strong bonding strength, safety is guaranteed.
- Perfect weather resistance, ensuring the service life of smart glass.
- The stability of the dimension solves the displacement problem of intermedlate materials and improves the yield.

ITEMS	Unit	Performance Index
Melting Point	C	64
Density	g/cm ³	0.988
Glass transition Temp	C	-40
Tensile Streight	Mpa	18.75
Elongation before laminated	%	75.5
Water Absorption	%	≤0.18
Haze	%	0.12
Light Transmittance	%	94.1
Bonding Streight(Glass)	%	138
UV Reduction	%	≥98.8
UV Aging Resistance	%	92.2
Heat Aging Resistance	%	91.7
Impact Resistance Against Shot-bag	1200MM	Qualified
Ball Impact Resistance	3000MM	Qualified
Humidity Aging Resistance		Qualified



Storage Guidelines

To maintain the quality and performance of our EVA films, please adhere to the following storage guidelines:

- **Temperature:** Store EVA films in a cool, dry place. The temperature of warehouse should not exceed 30C.
- **Humidity:** Maintain a relative humidity level of 60%.
- **Avoid Direct Sunlight:** Keep EVA films away from direct sunlight and sources of UV radiation to prevent premature degradation.
- **Clean Environment:** Store films in a clean, dust-free environment to avoid contamination. Particles and dust can affect the film's surface quality.
- **Flat Storage:** Store the films flat or in their original packaging to prevent creases, folds, and other deformations. If storing on rolls, ensure the rolls are supported along their entire length.

Shelf Life

Our EVA films have a shelf life of 12 months from the date of manufacture when stored under optimal conditions.

Handling Precautions

- Always handle EVA films with clean hands or gloves
- Use clean, sharp tools for cutting and handling the films
- Keep the films in their protective packaging until they are ready to be used to prevent exposure to dust and environmental conditions.



Thank You

Contact Us



PHONE

+971 50 291 0889



OFFICE ADDRESS

11102, Ibn Battute Gate Building,
Jebel Ali, Dubai, UAE



WAREHOUSE ADDRESS

Industrial 10, Sharjah , UAE



WEBSITE

www.fuyingroup.com



EMAIL

info@fuyingroup.com

